

Welcome to Třebíč



Content

Content	3
Czech Republic and the City of Třebíč	5
Geographical Location of the City	6
Basic Information	8
How to Get to Třebíč?	9
Development Areas	10
Transportation	14
Třebíč Bypass	15
Traveling Around Třebíč	16
Important Institutions	18
Health and Social Services	20
Schools and Education	24
Leisure Activities and Sports	28
Where to Go for Culture?	30
Conference Facilities	34
Accommodation and Dining Services	37
Shopping Centers and Shops	40
Waste Management	42
Safety and Crisis Management	45
Labor Market and Key Employers	46
District Chamber of Commerce Třebíč	48
Association Energetic Třebíčsko	49
Notes	50



**Welcome
to Třebíč**

Czech Republic and the City of Třebíč

The Czech Republic

The Czech Republic has been a member of the European Union since 2004, which increases its credibility as a business partner. It is a country with a stable economic environment, access to the EU market and Eastern Europe. The level of service provision, educational traditions and infrastructure are on par with those of Western European countries.

The City of Třebíč

The City of Třebíč is located almost in the center of the Czech Republic and is an important industrial, commercial, and tourist center. Due to its proximity to the Dukovany Nuclear Power Plant, which is situated 30 km from Třebíč, the city is a natural hub of the nuclear region.

Třebíč has nearly 35,000 inhabitants, with hundreds of people commuting to the city daily for work and study. Every year, approximately 150,000 tourists from around the world visit Třebíč and its UNESCO World Heritage monuments. Thanks to excellent public amenities, such as primary and nursery schools, playgrounds, parks,

as well as a wide range of cultural and leisure activities and almost zero crime, Třebíč is an ideal place to live for people of all age groups.

Třebíč is a 15-minute drive from the D1 highway connecting Prague and Brno. The city is crossed by first- and second-class roads, which connect to international road networks. The nearest international airports are in Brno (70 km), Vienna (130 km) and Prague (160 km). Třebíč is also served by the Brno–Jihlava railway line, which connects to international corridors and is used for both passenger and freight transport.

Geographical Location of the City

Třebíč is situated on both banks of the Jihlava River, which forms the natural axis of the city and the entire region. It is surrounded by the wooded landscape typical of the Bohemian-Moravian Highlands. The region is one of the areas with the cleanest environment, making it not only ideal for recreation and living but also for successful business ventures.

Within the city of Třebíč, green spaces are represented in the form of city parks – such as Mácha's Gardens in the city center, the park at Polanka, Tyrš's Gardens on the southern edge of the center, Masaryk's Gardens (Hrádek) in the north, the castle park, Lorenz's Gardens and Libušino Valley. The Týnské Valley, with its cascade of ponds, extends all the way to the city center.

WHY DO BUSINESS IN TŘEBÍČ?

- The center of the region with ample land and commercial spaces
- Ready industrial zones
- Energetically self-sufficient city
- High-quality business environment
- Region with low operating costs
- Educated, skilled, and flexible workforce
- Local government ready to cooperate
- Support from the District Chamber of Commerce Třebíč
- Sought-after tourist center
- Excellent public amenities ensuring high quality of life

**Welcome
to Třebíč**





Basic Information


Status:	City
Region:	Vysočina Region
Area:	57.6 km ²
Population (as of January 1, 2024):	34 797
Geographical Coordinates:	49°12'54" N, 15°52'54" E
Altitude:	405 m a.s.l.



How to Get to Třebíč?

 BY CAR	DISTANCE	TIME
Prague (CZ)	160 km	1 h 47 min
Brno-Center (CZ)	61 km	58 min
Vienna (A)	137 km	2 h 13 min
Bratislava (SK)	193 km	2 h 02 min
Katowice (PL)	319 km	3 h 30 min
Budapest (HU)	390 km	4 h 10 min
Munich (DE)	540 km	5 h 30 min

 BY TRAIN	DISTANCE	TIME
Prague (CZ)	204 km	3 h 24 min
Brno-Center (CZ)	63 km	1 h 11 min
Vienna–Main Train Station (A)	212 km	3 h 28 min

 BY PLANE	DISTANCE	TIME
Prague - Václav Havel Airport (CZ)	184 km	1 h 51 min
Brno-Tuřany (CZ)	73 km	55 min
Vienna (A)	154 km	2 h 02 min
Bratislava (SK)	204 km	2 h 00 min

Development Areas

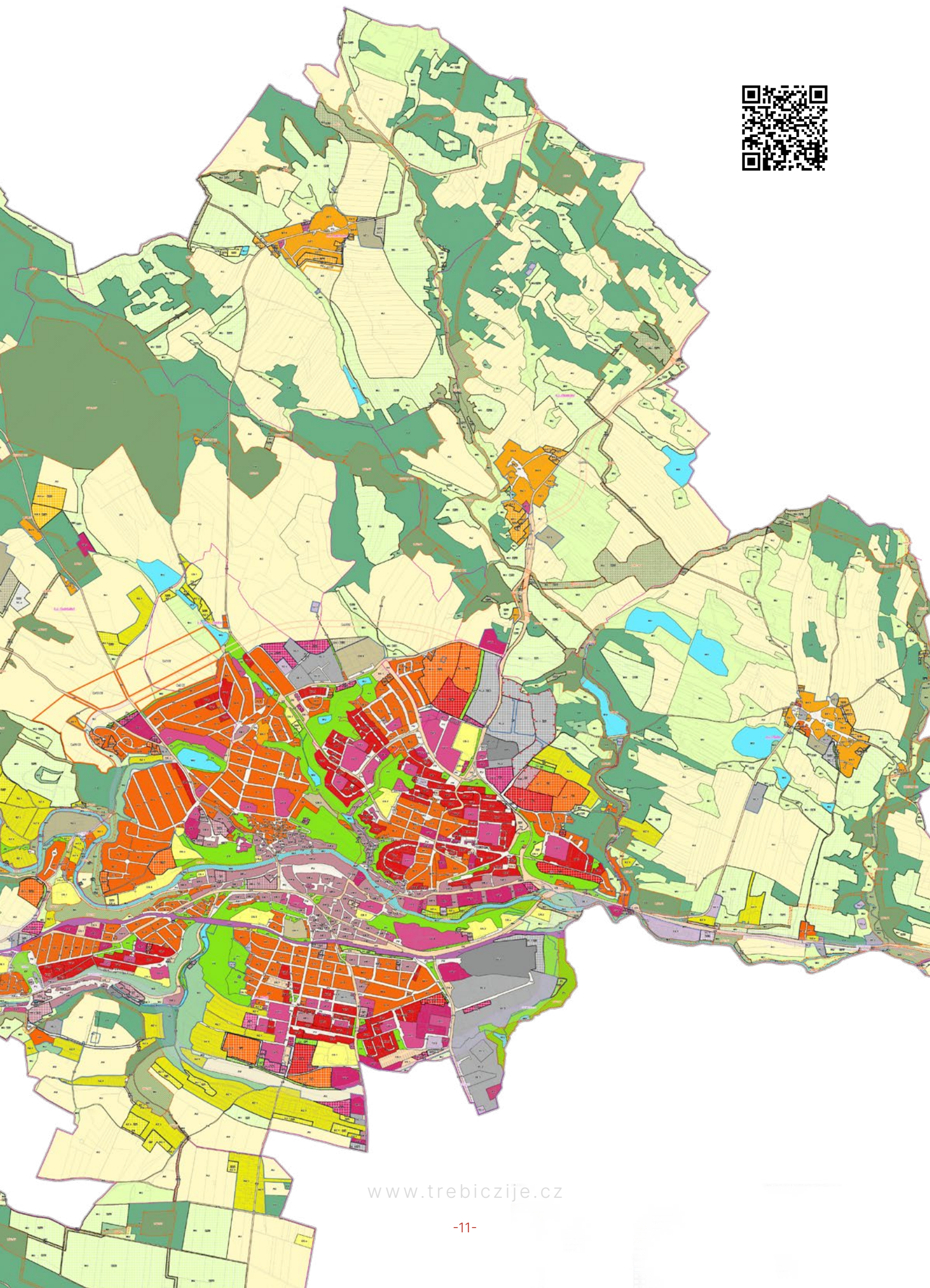
Development Areas for Business and Housing

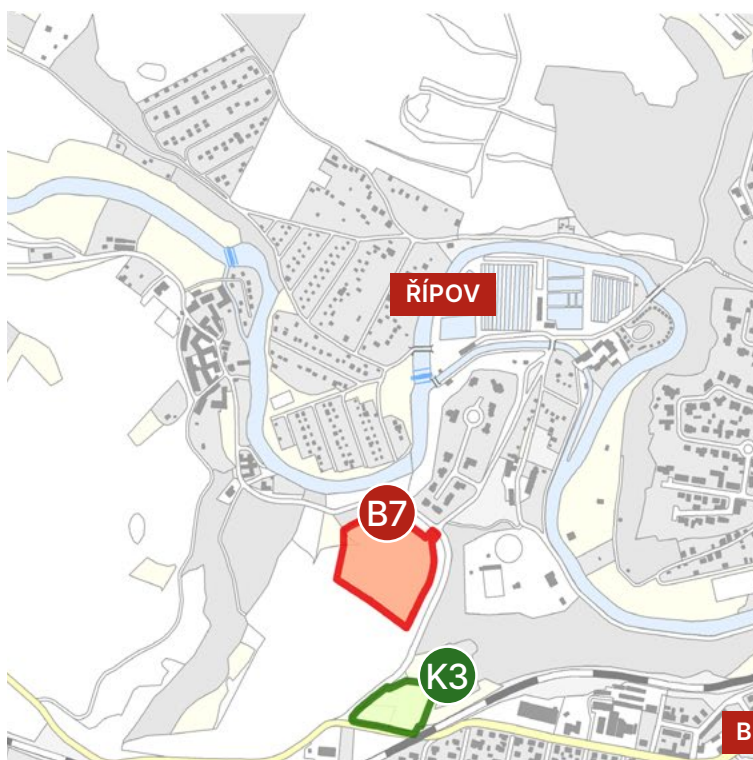
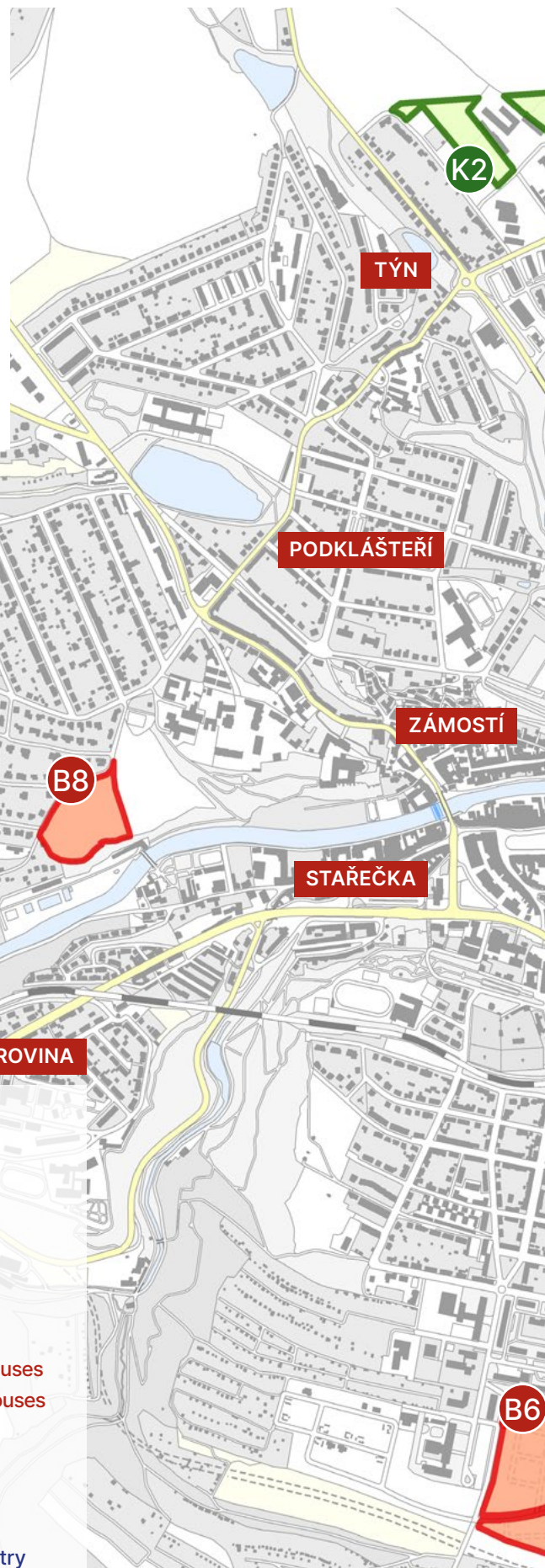
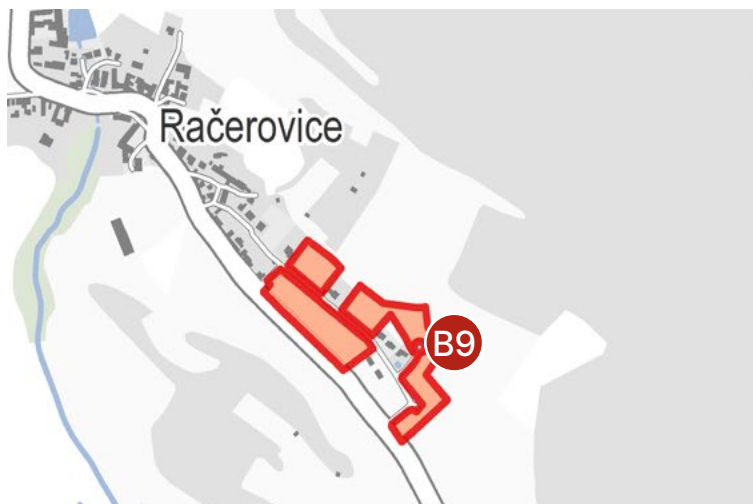
The city of Třebíč is constantly looking for opportunities and possibilities for development. It issues a zoning plan, which serves as a conceptual plan for land use development and works with the areas it owns. It prepares land for the construction of family homes and apartment buildings, areas for manufacturing and storage, as well as spaces for commercial use. Other land within the city limits is owned by private individuals.

What is a Zoning Plan?

A zoning plan defines the basic concept of land development and determines its future use. It specifies where and what can be built and where it is not possible to do so. It does not mandate the construction of buildings but legally either allows or prohibits this possibility.



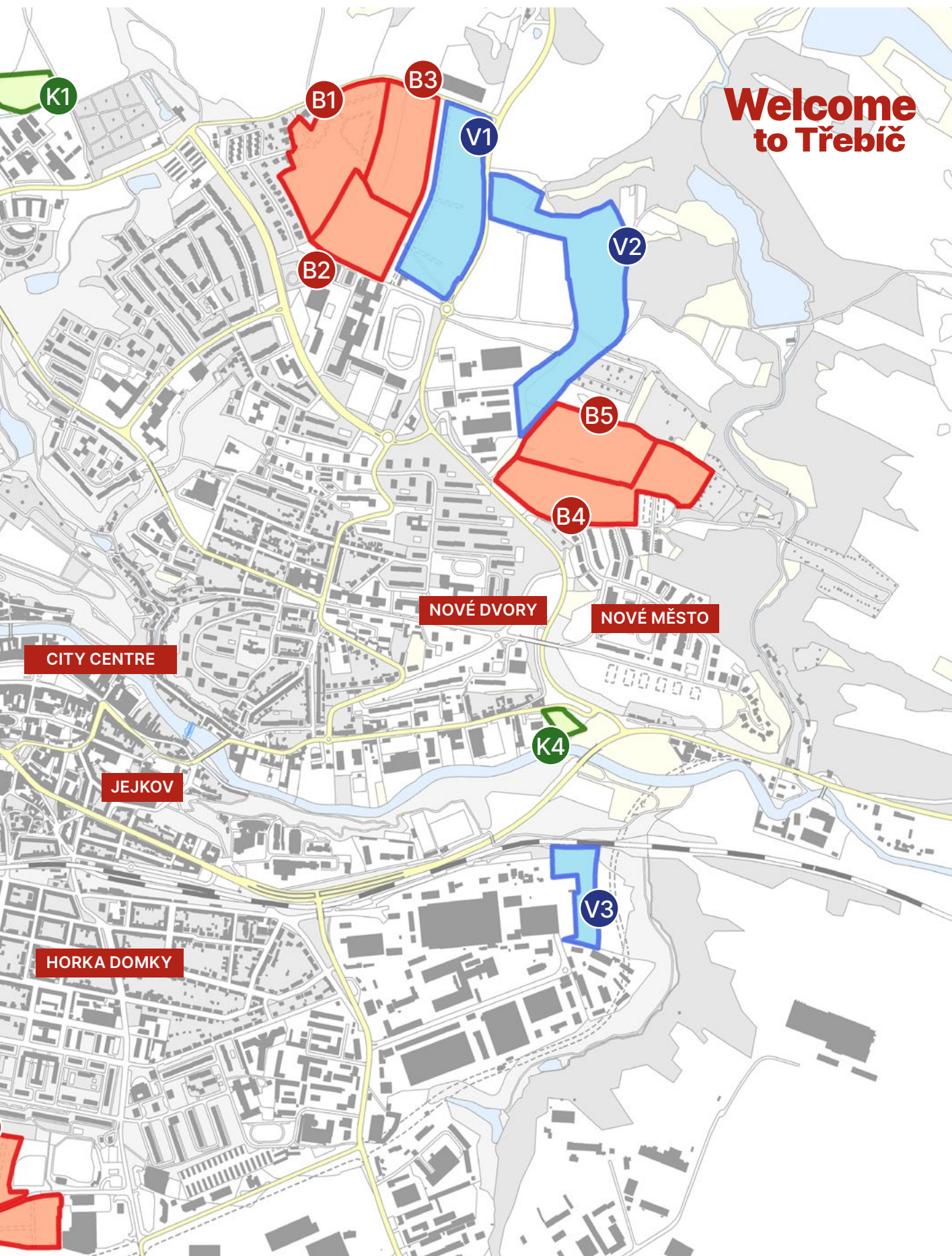




Development Areas

NAME OF LOCATION

- B1 Hájek II. – Residential area with family houses
- B2 Hájek III. – Residential area with apartment buildings
- B3 Hájek IV. – Residential area with family houses
- B4 Residential Area Na Kopcích III. – Residential area with apartment and family houses
- B5 Residential Area Na Kopcích IV. – Residential area with apartment and family houses
- B6 Vienna Pond – Residential area with apartment and family houses
- B7 Residential Area Včelník – Residential area with family houses
- B8 Residential Area Nehradov III. – Residential area with family houses
- B9 Račerovice - South – Residential area with family houses
- V1 Rafaelova Industrial Zone II. – Manufacturing and storage areas – light industry
- V2 Rafaelova Industrial Zone III. – Manufacturing and storage areas – light industry
- V3 Hrotovecká Industrial Zone – Manufacturing and storage areas – light industry
- K1 Commercial Public Amenities
- K2 Commercial Public Amenities
- K3 Commercial Public Amenities
- K4 Commercial Public Amenities



**Welcome
to Třebíč**

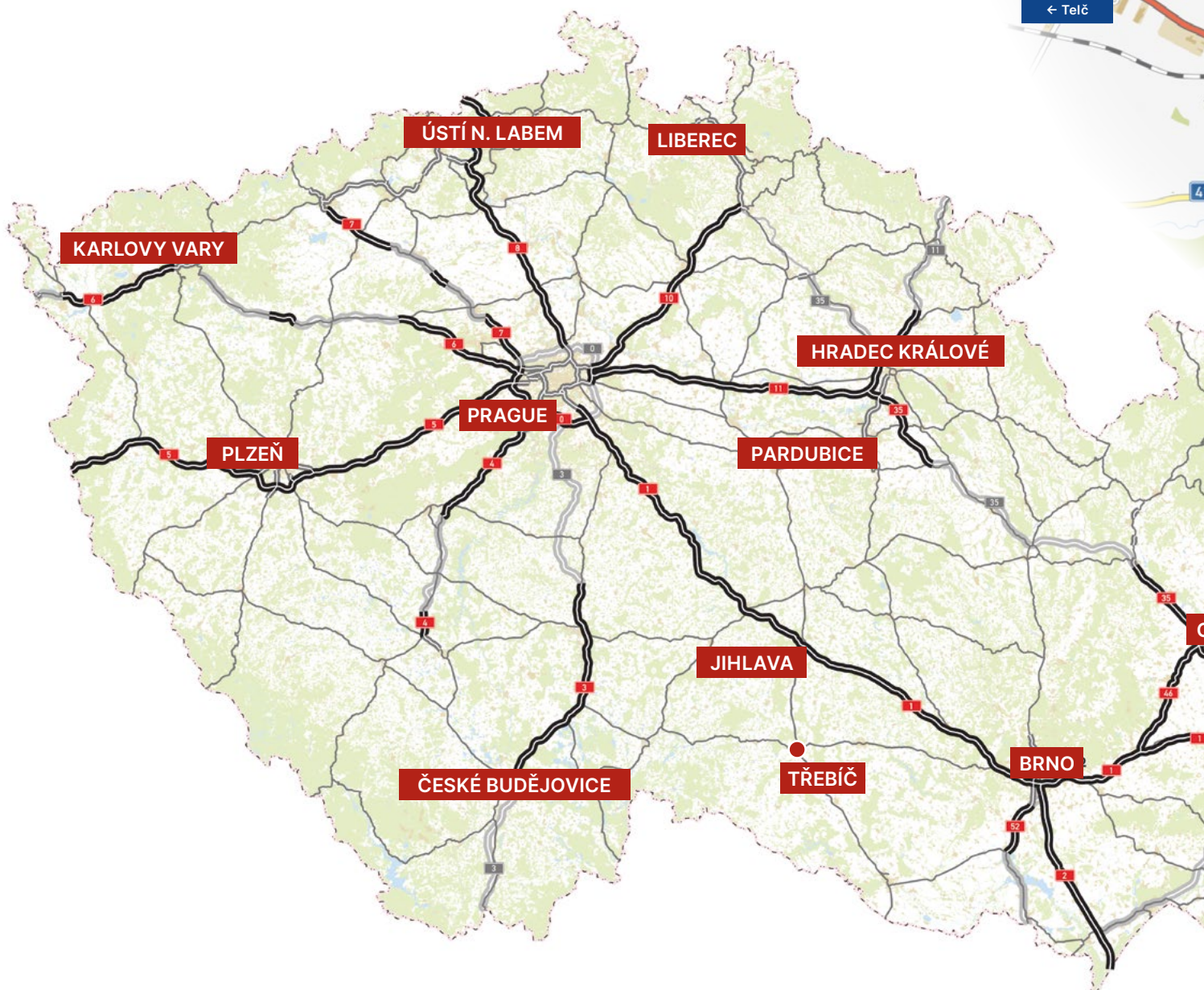
Transportation

The road network in the Czech Republic is composed of first, second and third-class roads.

Highways are the highest category of road transport routes in the Czech Republic.

The total length of operated highway sections is 1,388.2 km, with hundreds of kilometers currently under construction or planned.

Highways have been toll-based since 1995 and the highway vignette can be purchased at www.edalnice.cz.



Třebíč Bypass



Třebíč Bypass

Construction is planned to begin in 2026, with completion expected in 2029, coinciding with the planned construction of the fifth and sixth blocks of the Dukovany Nuclear Power Plant. Thanks to the Bypass, travel within the city will be more convenient for the residents of Třebíč as well as for transit traffic that only passes through the city.

WHAT WILL HAPPEN AFTER THE BYPASS IS BUILT?

1. Traffic within the city will significantly decrease.
2. The speed and comfort of public transportation will improve.
3. The streets of the current main route will be better utilized for the residents.
4. Street repairs in the city will become more manageable (road closures will be easier to bypass).

www.obchvat.trebic.cz



Traveling around Třebíč

CITY BUS TRANSPORT (MAD)

The MAD (Municipal Public Transport) in Třebíč operates from 4:15 AM to 11:15 PM on ten lines – three main lines, six supplementary lines, and one school line. The main transport hub is Karlovo Square, where nine lines stop. City bus transportation in Třebíč is provided by 25 buses, including 15 diesel-powered buses and 10 electric-powered buses. These buses travel more than 3,000 km daily.

PARKING

You can park your car in parking lots scattered throughout the city.

It is convenient to use the P+R (Park and Ride) parking lot at the transfer terminal near the train station or the catchment parking lot near the Hrotovecká industrial zone.





CYCLING TRANSPORT

RIDING A BIKE

Cycling is a popular mode of transport. There are 90 shared bikes available (including 10 electric bikes). The first fifteen minutes of bike use are subsidized by the city and are free for registered users in the app www.nextbikeczech.com.

Using the electric bike is charged from the beginning of use. New cycling measures ensure greater safety and better traffic flow around the city. You can use the city's cycling circuit, which connects interesting spots in Třebíč (www.trebicnakole.cz).

You will find information about shared bikes at: www.nextbikeczech.com



Important Institutions

TŘEBÍČ CITY HALL

Třebíč City Hall is an open, trustworthy, and communicative organization that provides professional and efficient services while supporting the growth of its employees. In collaboration with the public, it actively contributes to the comprehensive development of the city of Třebíč in a creative manner.

HERE YOU CAN HANDLE:

- 1) Establishment of a trade license
 - 2) Notification of address for correspondence
 - 3) Certification of documents (certification) and signature verification (legalization)
 - 4) Registration of municipal waste
 - 5) Marriage registration and entry into a registered partnership
 - 6) Change of first name or surname
 - 7) Issuance of civil status documents (birth certificate, marriage certificate, death certificate)
 - 8) Change of permanent residence address
 - 9) National ID card
 - 10) Travel document (passport)
 - 11) Driver's license – issuance, exchange, issuance of an international driving permit
 - 12) Vehicle registration in the road vehicle registry
 - 13) Parking permits
 - 14) Hunting license
 - 15) Fishing license
- and others.

CONTACT

City of Třebíč
Karlovo Square 104/55
Třebíč 674 01
Phone: +420 568 896 100
E-mail: epodatelna@trebic.cz

CITY HALL Karlovo Square 104/55
CITY HALL Masarykovo Square 116/6

OFFICE HOURS

Monday
8:00 AM - 5:00 PM
Tuesday
8:00 AM - 2:00 PM
Wednesday
8:00 AM - 5:00 PM
Thursday
8:00 AM - 2:00 PM
Friday
8:00 AM - 1:00 PM

You can find the complete list at:
www.trebic.cz



— OVERVIEW OF OTHER INSTITUTIONS IN TŘEBÍČ

FINANCIAL OFFICE

Žerotínovo Square 17/1

www.financnisprava.cz

CZECH REPUBLIC EMPLOYMENT OFFICE - Regional Branch in Jihlava,

Třebíč Contact Office

Komenského Square 1189/8

- Job placement

<https://www.uradprace.cz>

Masarykovo Square 116/6, Inner City

- Social Services

- Care Allowance

- Benefits for Disabled Individuals

<https://portal.mpsv.cz>

CATASTROPHIC LAND OFFICE FOR THE VYSOČINA REGION

- Třebíč Branch

Jungmannova St. 178/2

<https://cuzk.gov.cz>

DISTRICT SOCIAL SECURITY ADMINISTRATION TŘEBÍČ

Karlovo Square 106/57

<https://www.cssz.cz>

DISTRICT COURT IN TŘEBÍČ

Bráfova St. 502

<https://justice.cz>

CUSTOMS OFFICE FOR THE VYSOČINA REGION

- Local Office

- Tax Department only

Průmyslová Quarter 154

<https://celnisprava.gov.cz>

Czech Police – Regional Police Directorate of the Vysočina Region

Třebíč Territorial Department

Bráfova St. 11

<https://www.policie.cz>

Czech Post

Smila Osovského St. 2/1

<https://www.postaonline.cz>

Health and Social Services

Třebíč Hospital is a comprehensive healthcare center that provides specialized and high-quality medical care for people of all ages. The founder is the Vysočina Region. Both inpatient and outpatient departments offer a high standard of services. This is also supported by the ongoing modernization of the campus and medical equipment. The city has two outpatient clinics where the offices of general practitioners and specialists, including dentists, are concentrated. Many other medical offices are distributed throughout the city.

Overview of Healthcare Facilities in Třebíč

— Třebíč Hospital

Purkyňovo Square 133/2, www.nem-tr.cz

The hospital has a total of 536 beds and 1,111 employees. The number of employees varies over time.

— Polyclinic / Medical House, Ltd.

Vltavinská St. 1289, www.poliklinikatr.cz

— Healthcare Center Hájek

Jelínkova St. 991

LIST OF ALL
HEALTHCARE
FACILITIES IN TŘEBÍČ



LIST OF PHARMACIES
IN TŘEBÍČ



Health Insurance Companies

The following health insurance companies are currently operating in the Czech Republic:

- » General Health Insurance Company of the Czech Republic (VZP)
- » Military Health Insurance Company of the Czech Republic (VoZP)
- » Czech Industrial Health Insurance Company (ČPZP)
- » Health Insurance Company of the Ministry of the Interior of the Czech Republic (ZPMV)
- » Sectoral Health Insurance Company for Employees of Banks, Insurance Companies, and Construction (OZP)
- » Employee Health Insurance Company Škoda (ZPŠ)
- » Revírní Bratrská Pokladna, Health Insurance Company (RBP)

Health insurance companies are independent legal entities tasked with managing public health insurance. This very extensive activity primarily includes, on one hand, the collection of premiums from insurance payers, and on the other hand, the reimbursement of health services to healthcare providers.

Health insurance companies in Třebíč

- **VZP** Na Potoce St. 25
www.vzp.cz
- **VoZP** Karlovo Square 146/9a
www.vozp.cz
- **ČPZP** Komenského Square 1342/7
www.cpzp.cz
- **ZPMV** Oldřichova St. 159
www.zpmvcr.cz
- **OZP** B. Václavka St. 117/3
www.ozp.cz

Non-profit organizations

The main purpose of non-profit institutions is to support society and selected groups.

In Třebíč, these organizations most often operate in the fields of culture, sports, education, healthcare, charity, or humanitarian aid.

— Regional Charity Třebíč

Assistance in the social, healthcare, and humanitarian fields.

trebic.charita.cz

— STŘED, z. ú.

Assistance and prevention for people with problems in everyday life.

www.stred.info

— Vrátko, z.s.

Support for people with various disabilities.

www.vratka.cz

— Day Center "Barevný svět", z.ú.

Assistance and support for people with intellectual and combined disabilities.

www.barevny-svet.eu

— DIANA - Home Care s.r.o.

Specialized home healthcare.

www.domacipece-diana.cz



Health Services

HEALTHCARE FACILITIES

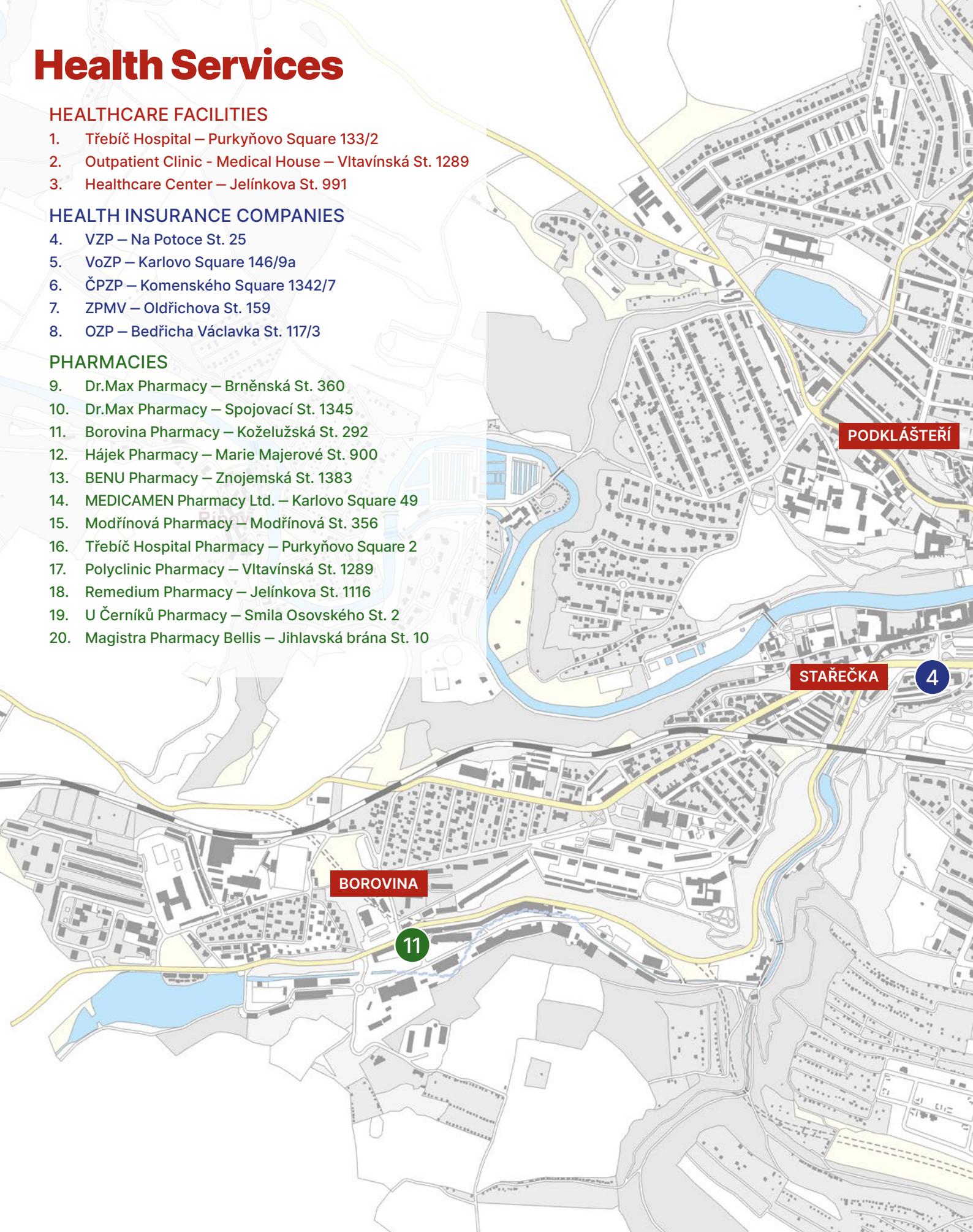
1. Třebíč Hospital – Purkyňovo Square 133/2
2. Outpatient Clinic - Medical House – Vltavínská St. 1289
3. Healthcare Center – Jelínkova St. 991

HEALTH INSURANCE COMPANIES

4. VZP – Na Potoce St. 25
5. VoZP – Karlovo Square 146/9a
6. ČPZP – Komenského Square 1342/7
7. ZPMV – Oldřichova St. 159
8. OZP – Bedřicha Václavka St. 117/3

PHARMACIES

9. Dr.Max Pharmacy – Brněnská St. 360
10. Dr.Max Pharmacy – Spojovací St. 1345
11. Borovina Pharmacy – Koželužská St. 292
12. Hájek Pharmacy – Marie Majerové St. 900
13. BENU Pharmacy – Znojemská St. 1383
14. MEDICAMEN Pharmacy Ltd. – Karlovo Square 49
15. Modřínová Pharmacy – Modřínová St. 356
16. Třebíč Hospital Pharmacy – Purkyňovo Square 2
17. Polyclinic Pharmacy – Vltavínská St. 1289
18. Remedium Pharmacy – Jelínkova St. 1116
19. U Černíků Pharmacy – Smíla Osovského St. 2
20. Magistra Pharmacy Bellis – Jihlavská brána St. 10





**Welcome
to Třebíč**

Schools and Education

The education system in Třebíč ensures comprehensive education from kindergarten to secondary schools. The city also has a corporate kindergarten offering English language instruction based on the proven Wattsenglish method, kindergartens and primary schools with specially focused classes, secondary schools, and language schools that also offer Czech language lessons for foreigners. Světýlko Kindergarten and Světlo Primary School are institutions offering education with Christian values. There are 13 institutions for preschool children in Třebíč. After that, children can choose from 8 primary schools, including one for children with special educational needs. After-school leisure activities are mainly provided by the Třebíč School of Art and the House of Children and Youth. The next level of education, with a wide range of fields, is provided by 7 secondary schools and vocational schools. Among them are 2 "gymnasiums" (secondary grammar schools) - both offering an eight-year gymnasium program.

The Třebíč Gymnasium was founded by the city of Třebíč in 1871 as one of the first Czech gymnasiums in the country. In 1889, the city built a school building for the gymnasium, where classes are still held today.

The Catholic Gymnasium Třebíč is a general church gymnasium offering both four-year and eight-year education programs. It collaborates with Mensa Czech Republic and emphasizes the teaching of foreign languages and computer literacy.

The Bráfova Academy Třebíč, Secondary School and Language School with the right to administer state language exams is one of the largest secondary schools in the Třebíč region. It prepares students at a high level for fields such as business, gastronomy, tourism, and related services.

The Třebíč Secondary Industrial School, with a 70-year tradition, currently has 1,328 students and offers studies in fields such as energy, engineering, mechanical electronics, and more. All educational activities are linked with partner companies in the region.

The Třebíč Secondary School of Construction offers secondary education in the field of construction in the form of four-year study programs and three-year vocational programs.

The Higher Vocational School and Secondary Veterinary, Agricultural, and Medical School Třebíč was founded in 2004 by merging the medical and agricultural schools. The school offers 4 fields of education with a matriculation exam and 2 higher vocational education programs - fields of study completed with a diploma.

The Academy of Law, Pedagogy, and Business, Ltd. offers two to four years of education completed with a matriculation exam in various specializations, as well as a two-year pedagogy program for teaching assistants, concluded with a final exam.

— KINDERGARTENS

Kindergarten - Bartuškova St. 886
Kindergarten - Benešova St. 564
Kindergarten - Cyrilometodějská St. 754/6
Čtyřlístek Kindergarten - Kubišova St. 1291
Kindergarten - Demlova St. 999/5
DUHA Kindergarten - Jaroslava Haška St. 835/31
Kaštánek Kindergarten - Gorazdovo Square 462
Kindergarten - Obránců míru St. 491
Kindergarten - Okružní St. 962/13
Kindergarten - U Obůrky St. 703
Special Kindergarten - Družstevní St. 1079
Světýlko Kindergarten Ltd. - Demlova St. 890
Kindergarten At The Castle - Na Hradě Kindergarten, z.s. - T. Bati St. 1100

— PRIMARY SCHOOLS

Primary School Bartuškova - Bartuškova St. 700/20
Primary School Benešova - Benešova St. 585
Primary School Horka-Domky - Václavské Square 44/12
Primary School Kpt. Jaroše - Kpt. Jaroše St. 836
Primary School and Preschool Na Kopcích - Na Kopcích St. 342
Primary School T. G. Masaryka - Komenského Square 61/6
Primary School Třebíč - Cyrilometodějská St. 42/22
Primary School Týnská - Týnská St. 8
Třebíč School of Art - Masarykovo Square 1313
Světlo Primary School Ltd. Třebíč - Zahradníčkova St. 890/21

— SECONDARY SCHOOLS AND HIGHER VOCATIONAL SCHOOLS (VOŠ)

Gymnasium Třebíč
Masarykovo Square 116/9
Catholic Gymnasium Třebíč
Otmarova St. 30/22
The Bráfova Academy Třebíč, Secondary School and Language School with the right to administer state language exams
Bráfova St. 9
Třebíč Secondary Industrial School
Manž. Curieových St. 734
Třebíč Secondary Construction School
Kubišova St. 1214
Higher Vocational School and Třebíč Veterinary, Agricultural, and Healthcare Secondary School
Žižkova St. 505/2
Academy of Law, Pedagogy, and Business, Ltd. Třebíč
Secondary School
Znojemská St. 1027

Schools

KINDERGARTENS

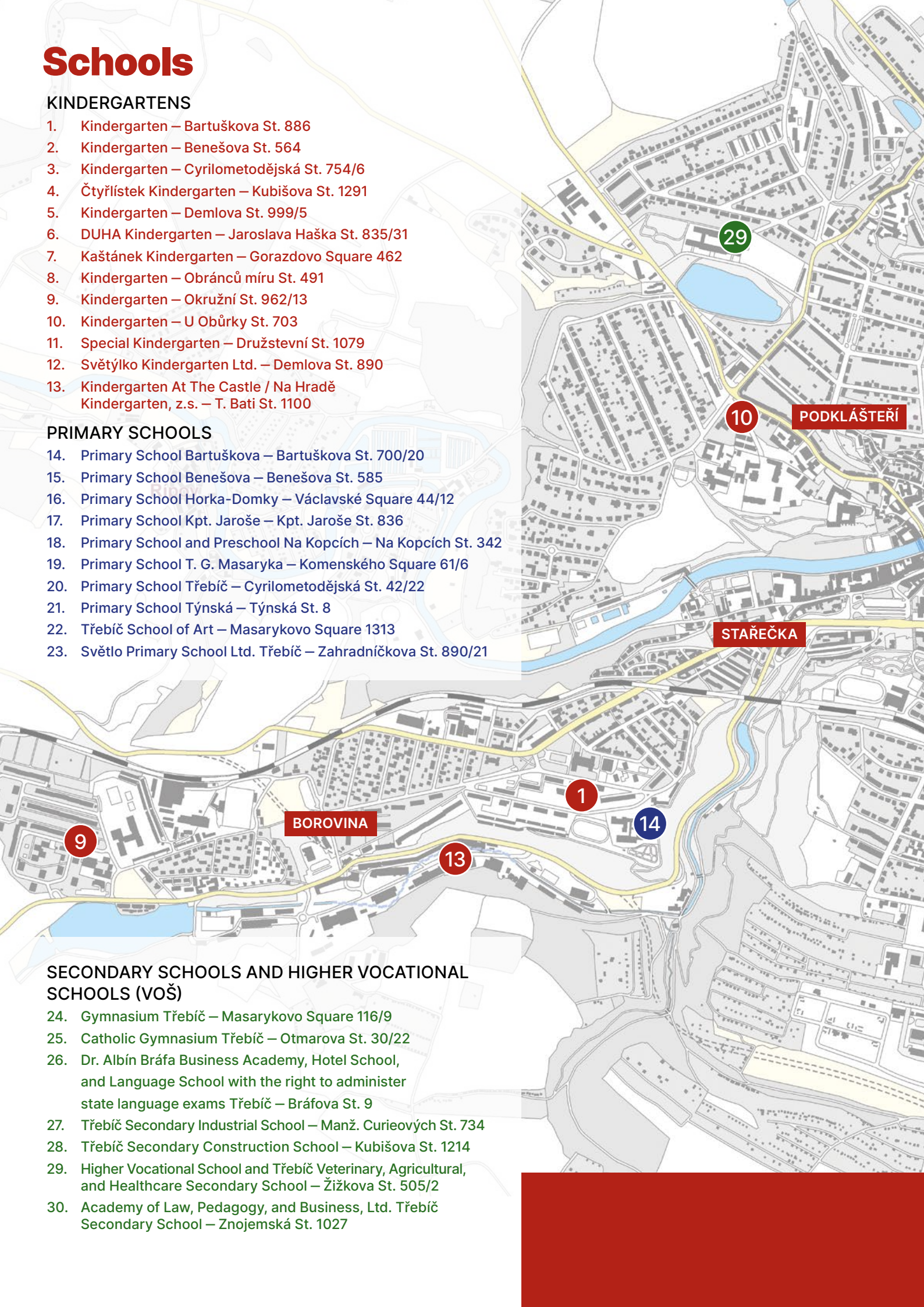
1. Kindergarten – Bartušková St. 886
2. Kindergarten – Benešova St. 564
3. Kindergarten – Cyrilometodějská St. 754/6
4. Čtyřlístek Kindergarten – Kubišova St. 1291
5. Kindergarten – Demlova St. 999/5
6. DUHA Kindergarten – Jaroslava Haška St. 835/31
7. Kaštánek Kindergarten – Gorazdovo Square 462
8. Kindergarten – Obránců míru St. 491
9. Kindergarten – Okružní St. 962/13
10. Kindergarten – U Obůrky St. 703
11. Special Kindergarten – Družstevní St. 1079
12. Světýlko Kindergarten Ltd. – Demlova St. 890
13. Kindergarten At The Castle / Na Hradě Kindergarten, z.s. – T. Bati St. 1100

PRIMARY SCHOOLS

14. Primary School Bartušková – Bartušková St. 700/20
15. Primary School Benešova – Benešova St. 585
16. Primary School Horka-Domky – Václavské Square 44/12
17. Primary School Kpt. Jaroše – Kpt. Jaroše St. 836
18. Primary School and Preschool Na Kopcích – Na Kopcích St. 342
19. Primary School T. G. Masaryka – Komenského Square 61/6
20. Primary School Třebíč – Cyrilometodějská St. 42/22
21. Primary School Týnská – Týnská St. 8
22. Třebíč School of Art – Masarykovo Square 1313
23. Světlo Primary School Ltd. Třebíč – Zahradnickova St. 890/21

SECONDARY SCHOOLS AND HIGHER VOCATIONAL SCHOOLS (VOŠ)

24. Gymnasium Třebíč – Masarykovo Square 116/9
25. Catholic Gymnasium Třebíč – Otmarova St. 30/22
26. Dr. Albin Bráfa Business Academy, Hotel School, and Language School with the right to administer state language exams Třebíč – Bráfova St. 9
27. Třebíč Secondary Industrial School – Manž. Curieových St. 734
28. Třebíč Secondary Construction School – Kubišova St. 1214
29. Higher Vocational School and Třebíč Veterinary, Agricultural, and Healthcare Secondary School – Žižkova St. 505/2
30. Academy of Law, Pedagogy, and Business, Ltd. Třebíč Secondary School – Znojemská St. 1027



Welcome to Třebíč



Leisure Activities and Sports

Sport has a rich history in Třebíč. The development of sports activities and the establishment of new ones is supported by the city, local clubs and associations and is made possible thanks to numerous sports facilities in Třebíč. In addition to traditional sports, martial arts such as taekwondo, aikido, and judo, among others, are also well-represented.

— HOCKEY

Hockey has a long tradition in Třebíč. The hockey club Horácká Slavia was founded in 1928. Former members of the club have been and continue to be prominent players and coaches, such as Vladimír Bouzek or two-time Stanley Cup winner Patrik Eliáš.

www.hstrebic.cz

— FOOTBALL

Horácký Football Club Třebíč and the Football School Třebíč are clubs that operate in Třebíč, focusing on the development of young football players up to adults. Třebíč has two football fields: the Horácký football stadium and the football stadium in Borovina.

www.hfktrebic.cz

www.fstrebic.cz

— ATHLETICS

The history of the TJ Spartak Třebíč athletics club is tied to the first athletic competitions organized in Třebíč in 1919 by the student sports club Achilles. Czechoslovak representatives such as the Strniště brothers and Alois Krul started here. Among the current athletes, there is, for example, the European Championship gold medalist Petr Svoboda and the junior world champion in decathlon Jiří Sýkora.

www.atletikatrebic.cz

— BASEBALL

The Czech-Moravian Baseball League has been the second-highest men's competition in the Czech Republic since 2003. Currently, the Třebíč men's team, Nuclears, plays in this league. The Na Hvězdě stadium is home to the Třebíč baseball players.

www.nuclears.cz



SPORT FACILITIES

Třebíč offers a wide range of sports and recreational facilities for both locals and visitors, including venues for bowling, ten-pin bowling, ice skating, martial arts, fitness, pétanque, swimming and bathing, as well as tennis and squash. The TJ Spartak athletics stadium is used for training and hosting athletic competitions. Baseball players make use of the Na Hvězdě sports complex. The Zámiš-Bažantnice sports circuit is perfect for walking, running, cycling or inline skating.

SWIMMING POOLS AND SWIMMING

The Laguna pool and water park operates year-round. The complex also includes a sauna and massage services. The outdoor swimming pool at Polanka offers both sports and relaxation opportunities during the summer days.

— TOURISM AND CYCLING TOURISM

Lookout Tower on Pekelný Hill: Offering panoramic views of the surrounding area.

Cycling Path Jihlava - Třebíč - Raabs: A scenic route for cycling enthusiasts.

VVV Path: Connecting the city tower, the water reservoir at Kostelíček and the Windmill.

Hrádek - View Circles: A viewpoint offering impressive scenic views.

Educational Trails: Including Hrádek, Geopark and a dendrological trail in Týnské Valley, offering educational experiences in nature.

And many more.

— TENNIS COURTS

Tennis Court Třebíč - Karoliny Světlé St. 13

HTK Třebíč - Janáčkovo stromořadí St. 156

SPIN Tennis Třebíč - M. Majerové St. 397

TJ Spartak - Tennis Court - Manželů Curieových St. 734

— GYMNASIUMS

Octagon Fitness Třebíč - Františka Hrubína St. 1105

BOPO Factory Gym - Budishowského St. 1071

Bílý Králík - Řípovská St. 1044

Fitness Imperium - Čelakovského St. 278
And many more.

— SPORTS FACILITIES IN TŘEBÍČ

Sports Complex Na Hvězdě - Na Hvězdě St. 1388

Sports Center Třebíč - Kubišova St. 1231/53

Sports Circuit Zámiš - Bažantnice

Aquapark Laguna - Mládežnická St. 1096

Polanka Swimming Pool - Za Plovárnou St. 799

Leopold Pokorný Sports Hall - Fügnerova St. 1226

Ice Rink - Kateřiny z Valdštejna St. 1

Borovina Football Stadium - Vrchlického St. 990

Horácký Football Stadium Třebíč - Janáčkovo stromořadí St. 158/7

Athletics Stadium TJ Spartak Třebíč - Manželů Curieových St. 1112

Multifunctional Sports Complex - Zahraničního odboje St. 944
And many more.

Where to Go for Culture?

CULTURE IN TŘEBÍČ

Třebíč is a city with a rich cultural tradition and a diverse range of offerings for lovers of history, art and music. Due to its rich Jewish history and monuments listed on the UNESCO World Heritage list, such as the Jewish Quarter, the Jewish Cemetery and the Basilica of St. Procopius, Třebíč has become a cultural center in the Vysočina region. The city regularly hosts various cultural events, including concerts, theater performances and exhibitions. Theater troupes from all over the Czech Republic perform at the Pasáž Theater and the National House.

FESTIVALS

Among the most well-known is the multi-genre festival Zámostí, which takes place annually at the beginning of June. Another popular event is the Třebíč Cultural Summer, when the city comes alive with concerts, theater performances and other outdoor cultural programs. The Male Chajim festival is specifically dedicated to Jewish culture. August is reserved for the historical city celebrations called the "Slavnosti tří kápí" (Festivals of the Three Capes). In winter, thousands of people flock to the city to enjoy the atmosphere of Advent in Třebíč.

FUN WITH EDUCATION

Třebíč also offers a wide range of options for entertainment and active relaxation. For families with children, the ideal visit is to the Ecotechnical Center Alternátor, where both children and adults can try various interactive exhibits focused on science and technology. The Třebíč Planetarium and Observatory, the fun center Labyrint, and the Mozkoherna (Brain Gym) are also popular attractions.

MUSEUMS, GALLERIES, AND EXHIBITIONS

The Třebíč Castle is home to the Vysočina Museum of Třebíč. Interactive modern exhibits present the history of the castle, Třebíč and the region. The Franta Gallery in the National House displays works by the local and world-renowned painter František Mertl. In the Jewish Quarter, you will find the "Children of Antonín Kalina" exhibition, which honors another local figure who saved over 900 Jewish children in a concentration camp. A prominent landmark of Třebíč is the Windmill. Inside, there is an exhibition dedicated to the grinding of tanbark.



— MUSEUMS, GALLERIES AND EXHIBITIONS

Vysočina Museum of Třebíč
Seligmann Bauer House
Rear Synagogue
Interactive Exhibition "Paths Through Time"
Memorial Hall of Antonín Kalina and the "Children of Antonín Kalina" Exhibition
Painted House Gallery
Franta Exhibition
Disappeared Třebíč Exhibition
Tympanon Gallery

— ECO-TECHNOLOGICAL CENTERS AND AMUSEMENT PARKS

Labyrinth
Mozkoherna
Třebíč Observatory and Planetarium
Alternátor – Eco-Technological Center
Children's Amusement Park Střítež (located near Třebíč)

— CULTURAL FACILITIES

Fórum
Theatre and Cinema Pasáž
National House (Národní dům)
Municipal Library
Community Center Moravia

— MUSIC CLUBS

ROXY Club
Béčko Club
Art Rock Bistro U Lípy
Znojemka

ANNUAL POPULAR EVENTS

Zámostí
St. Prokop pilgrimage
Fairs
Male Chajim - Jewish culture festival
Three Capes Festival
Potato Harvest Festival
Pumpkin Harvest Festival
City Day
Advent opening and Christmas Třebíč



The complete list
can be found at:

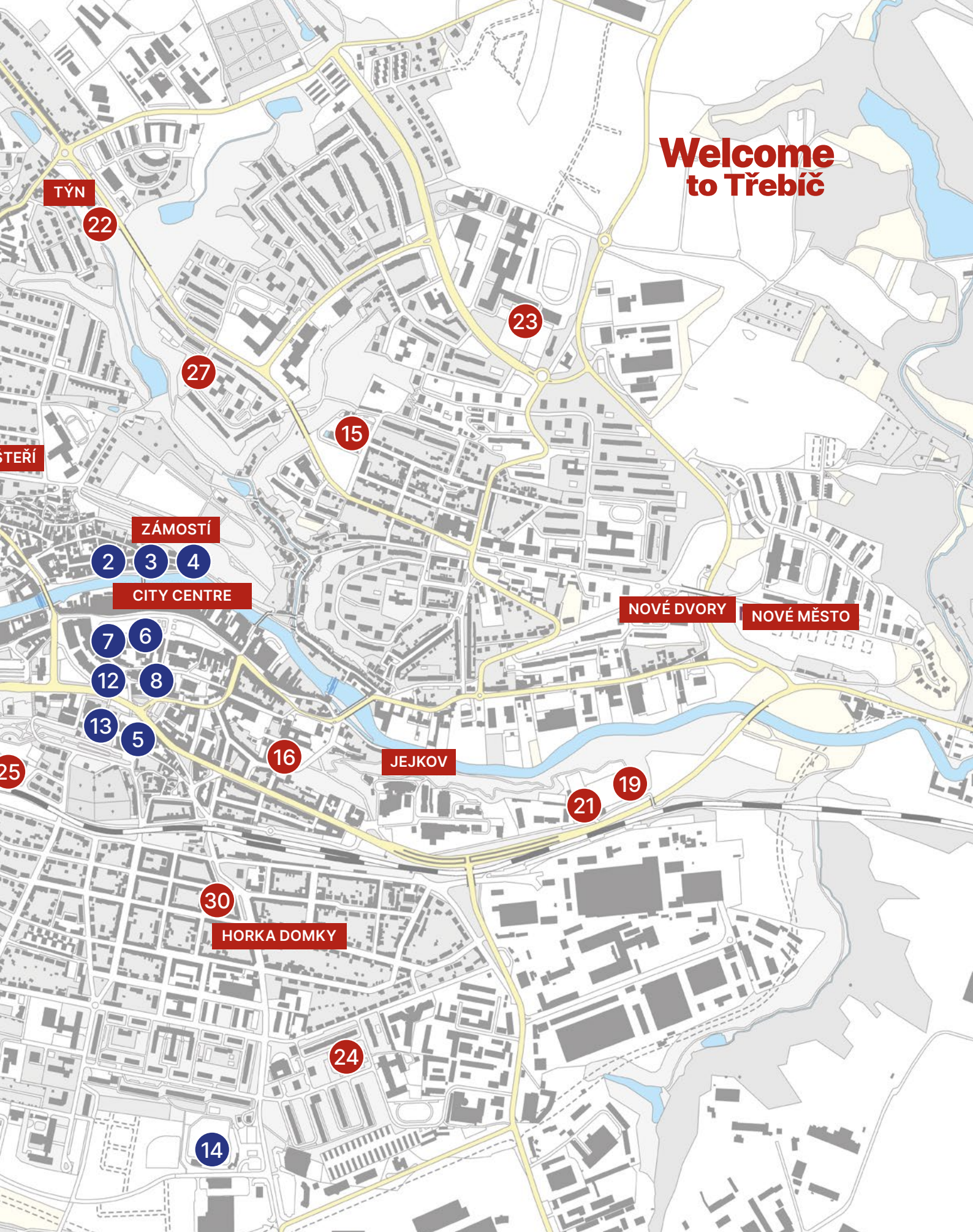


Cultural and Sports Facilities

1. Museum of the Highlands – Castle 1/1
2. Exhibition of Seligmann Bauer – Blahoslavova St. 77
3. Rear Synagogue – Blahoslavova St. 43
4. Memorial Hall of Antonín Kalina – Subakova St. 43/3
5. Cinema, Theatre Pasáž – Masarykovo Square 1323
6. National House – Karlovo Square 58/47
7. Gallery Painted House – Karlovo Square 64
8. Exhibition FRANTA – Karlovo Square 47
9. Observatory and Planetarium – Švabinského St. 1310/5
10. Alternátor – Ecotechnical Center – Tomáše Bati St. 1083
11. Labyrinth – Nad Zámkem St. 1174
12. Municipal Library – Hasskova St. 102/2
13. Community Center Moravia – Smrtná St. 389/6
14. Multifunctional Complex at "Na Hvězdě" – Na Hvězdě 1388
15. Aquapark Laguna – Mládežnická St. 1096
16. Ice Rink (Zimní stadion) – Kateřiny z Valdštejna St. 1
17. Swimming Complex Polanka – Za Plovárnou St. 799
18. Sports Circuit Záměš – Bažantnice
19. HTK Football Field – Janáčkově stromořadí St. 158/7
20. Borovina Football Field – Vrchlického St. 990
21. HTK Třebíč – Janáčkově stromořadí St. 156
22. Tenis Třebíč – M. Majerové St. 397
23. TJ Spartak - Tennis Court, Athletic Stadium – Manželů Curieových St. 734
24. Sports Center Třebíč – Kubišova St. 1231/53
25. Sports Hall Leopolda Pokorného – Fügnerova St. 1226
26. Multifunctional Sports Complex – Zahranič. odboje St. 944
27. Octagon fitness Třebíč – Františka Hrubína St. 1105
28. Bílý králík – Řípovská St. 1044
29. BOPO Factory Gym – Budishowského St. 1071
30. Fitness Imperium – Čelakovského St. 278



**Welcome
to Třebíč**



Conference Facilities

— Hotel Atom / accessible facility

Contact: www.hotelatom.cz

Capacity: **Multifunctional hall** – 320 seats at round tables, 250 seats in classroom arrangement, or 400 seats in theater arrangement

Catering: YES

Parking: YES



— Fórum / accessible facility

Contact: www.mkstrebic.cz

Capacity:

Large hall – max. capacity 600 seats, table arrangement 300 – 400 seats

Small hall – max. 120 seats, table arrangement 92 seats

Foyer – presentations, 2 changing rooms for visitors

Clubroom 110 – table arrangement 40 seats

Clubroom 023 – 12 seats

Catering: YES

Parking: YES



— Pasáž / accessible facility

Contact: www.mkstrebic.cz

Capacity:

Large hall – 523 seats

Small hall – 210 seats

Foyer – 160 seats at 40 tables

Cloakroom vestibule – 120 seats at 30 tables

Ballet hall – 80 seats at tables

Catering: YES

Parking: YES





— National House / accessible facility

Contact: www.mkstrebic.cz

Capacity:

Large theatre hall – 304 seats + 108 in the balcony / arrangement with a dance floor 128 seats / table arrangement up to 170 seats

Small hall – 90 seats (table arrangement 40 seats)

Foyer – 70 seats, table arrangement only

Catering: YES

Parking: YES



— Rear Synagogue

Contact: www.mkstrebic.cz

Capacity:

150 standing places

100 seating places

Catering: YES

Parking: YES



— Community Center Moravia

Contact: www.stred.info

Capacity:

Multifunctional hall with projector and sound system
(capacity approx. 75 places)

Meeting room for meetings, conferences, discussions, etc.

Catering: YES

Parking: YES

Training kitchen (equipped), **space for children** with an outdoor sandpit, space for community gatherings, markets, shows, exhibitions, etc. (capacity approx. 100 places), **gallery with exhibition system** (photos, paintings, sculptures, etc.) on the upper floor and in the library, **outdoor terrace, garden** with pétanque court, fire pit, lounge - for both private and business consultations.



**Welcome
to Třebíč**

Accommodation and Dining Services



**Visit
Třebíč**

Where to Eat and Drink?

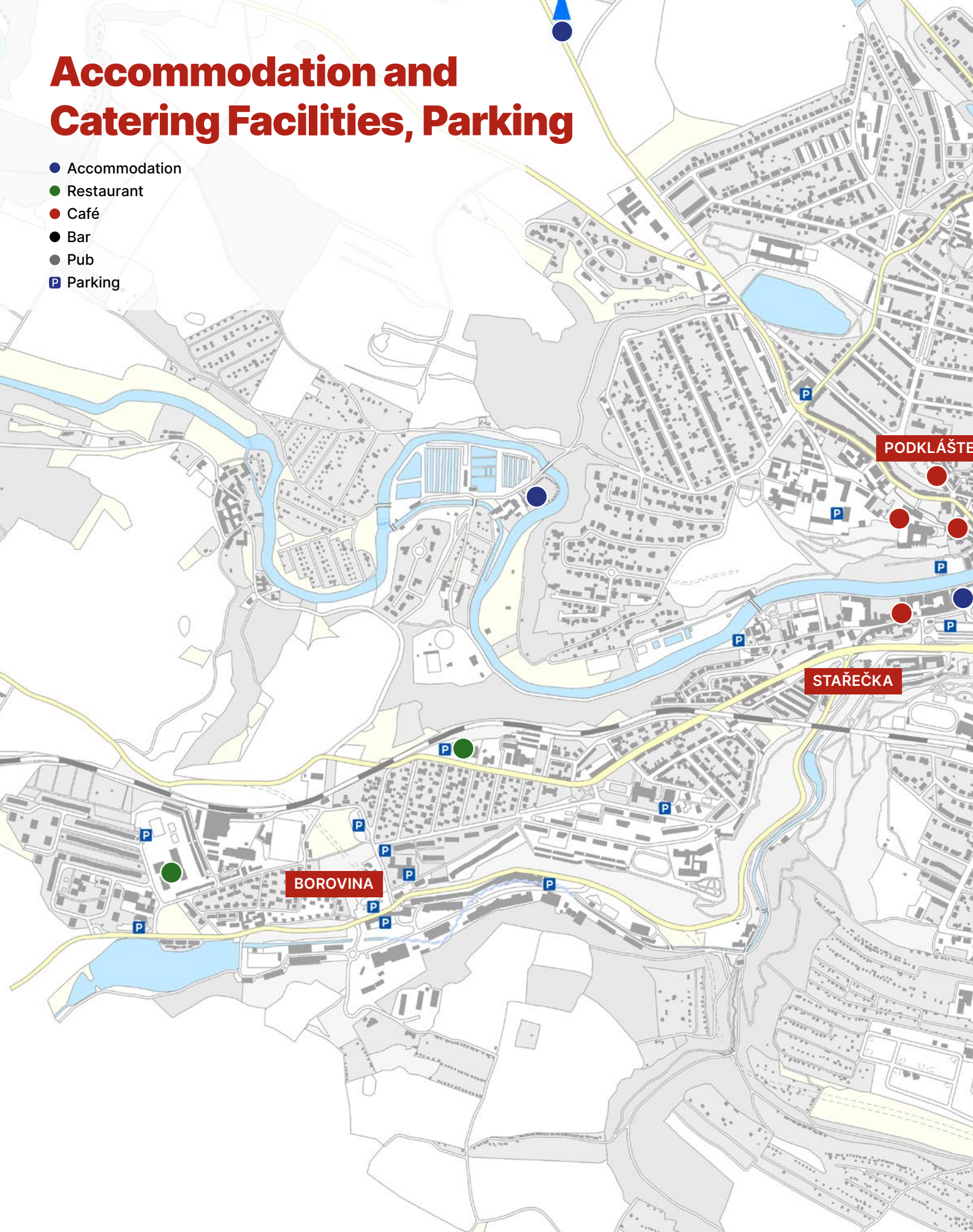
Třebíč offers a wide range of options for dining and drinking. You can visit local restaurants that serve traditional Czech cuisine, as well as modern dishes with international elements, including Asian specialties or Italian pizza. Both lovers of classic meals and those looking for new tastes and experiences will find something to enjoy. You can then refresh yourself at one of the many stylish cafés, traditional pubs, cozy wine bars or in taverns with the atmosphere of the old town.

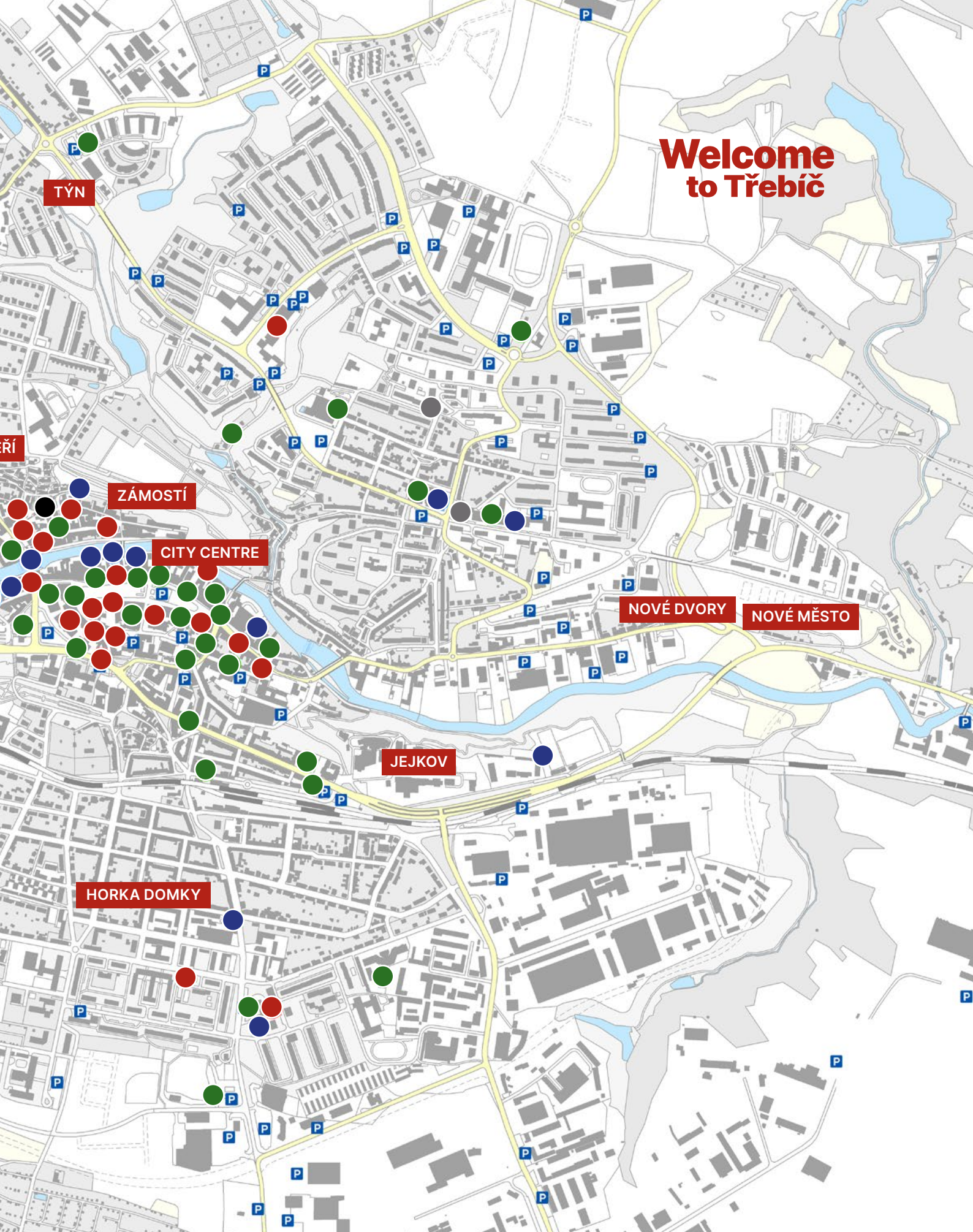
Where to Stay?

Třebíč offers a wide range of accommodation options to suit the needs of every visitor. The city has hotels for more demanding guests, pleasant guesthouses with a family atmosphere, comfortable apartments for longer stays, as well as budget-friendly tourist hostels and a quiet campsite for nature lovers. Everyone can choose according to their preferences and needs. For a complete overview of accommodation options and more information, visit visittrebic.eu.

Accommodation and Catering Facilities, Parking

- Accommodation
- Restaurant
- Café
- Bar
- Pub
- P Parking





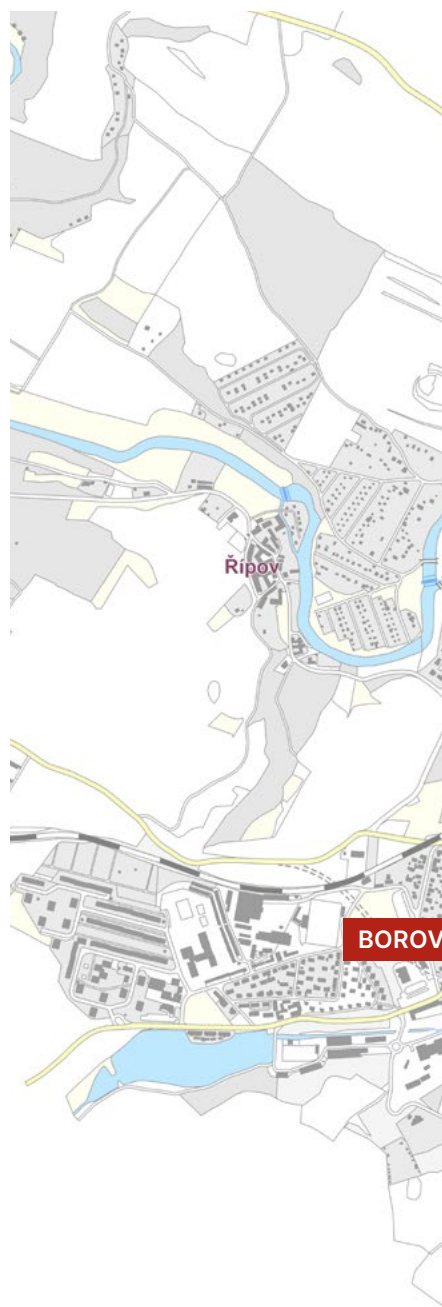
**Welcome
to Třebíč**

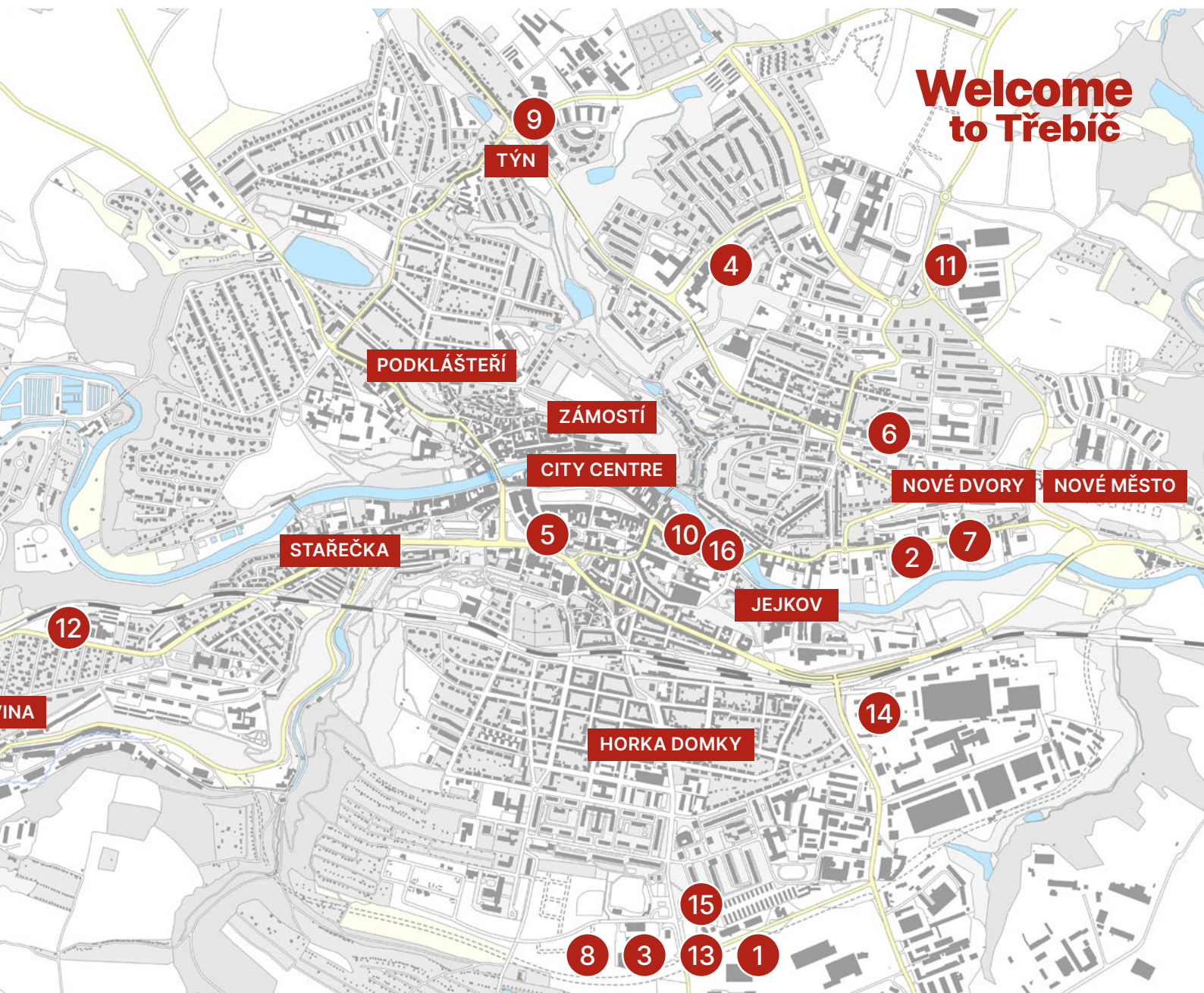
Shopping Centres and Shops

In addition to traditional stores in the city center, Třebíč also offers several larger shopping centers and supermarkets that meet the needs of a wider range of customers. Among the largest is the Stop Shop shopping center, which houses not only fashion and electronics stores but also fast food restaurants. Overall, Třebíč offers a diverse range of shops and services that satisfy both local residents and tourists. A popular destination for shoppers is Charles Square, one of the largest squares in the Czech Republic, where you can find numerous specialty stores, cafés, and restaurants. Local craftsmen and farmers offer their products in brick-and-mortar shops.



Kaufland	1. Spojovací St. 1345, Střítež-Třebíč 2. Brněnská St. 360
Albert	3. Znojemská St. 1383 4. Kpt. Jaroše St. 1136 5. Komenského Square 155 6. Modřínová St. 694
Lidl	7. Brněnská St. 452 8. Znojemská St. 1382
Billa	9. M. Majerové St. 296 10. Smila Osovského St. 2/1
Penny market	11. Rafaelova St. 1120 12. Pražská St. 1056
Stop Shop	13. (Shopping Centre) Spojovací St. 1345, Střítež-Třebíč Baťa, Deichmann, CCC, C&A, House, Cropp, New Yorker, Sinsay, Sportisimo, Takko, KIK, Expert elektro, Okay elektro, Jysk, Hauspezi, KFC, McDonald's...and more
Baumax	14. Hrotovická St. 160
Mountfield	15. Znojemská St. 1359
Shopping Centre	16. Smila Osovského St. Billa, Rossmann, Pepco, KIK





Waste Management

The collection and disposal of municipal waste from residents is provided by the Association of Municipalities for Municipal Services through its subsidiary company ESKO-T s.r.o.

Municipal waste is deposited at the waste landfill at Petrůvky, which is owned by the association of municipalities, of which the city of Třebíč is a member. Similarly, there is a sorting line, 3 recycling yards, and a Center for Second Chance Items (RE-USE center).

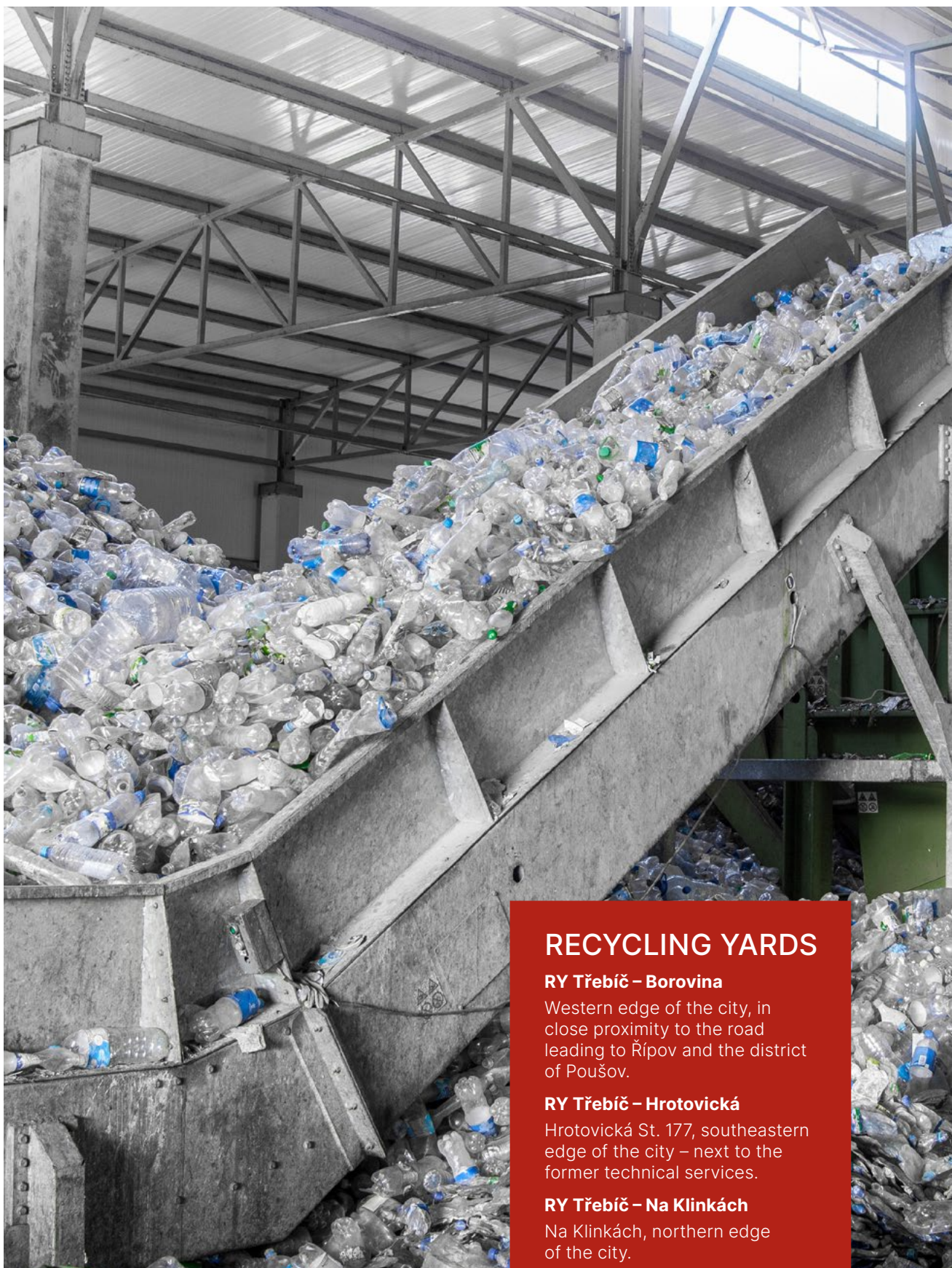
In the city area, approximately 1,025 collection bins for sorted waste are distributed. The primary waste categories being separated are packaging materials, glass, plastic, paper, metal and biodegradable waste. These containers are

placed at around 200 container stations. At selected locations, it is also possible to dispose of electronic waste and textiles.

In Třebíč, instead of mobile waste collection, we have 3 collection yards open for citizens and businesses to dispose of hazardous waste, bulky waste, clothing, metal and garden waste.

Large containers for biodegradable municipal waste are placed in areas with family houses and in local parts from approximately March to the end of November. There are a total of 27 large containers for biodegradable waste. Citizens had the opportunity to obtain a compost bin for home composting from the city administration.





RECYCLING YARDS

RY Třebíč – Borovina

Western edge of the city, in close proximity to the road leading to Řípov and the district of Poušov.

RY Třebíč – Hrotovická

Hrotovická St. 177, southeastern edge of the city – next to the former technical services.

RY Třebíč – Na Klinkách

Na Klinkách, northern edge of the city.

For more information, visit www.esko-t.cz



Address Locations

Police of the CR, Třebíč District Department – Bráfova St. 11
 Traffic Inspectorate of the Czech Police Třebíč – Bráfova St. 11
 Municipal Police Třebíč – Bedřicha Václavka St. 59/11
 Fire and Rescue Service – Žďárského St. 180
 Foreign Police Service of the Vysočina Region
 – Wolkerova St. 4448, 586 01 Jihlava 1

EMERGENCY CALLS - PHONE NUMBERS

Police of the Czech Republic	158
Emergency Medical Services	155
Fire and Rescue Service	150
Emergency Call	112
Municipal Police	156

Safety and Crisis Management

Citizen Safety is ensured by the Integrated Rescue System (IZS)

The Integrated Rescue System (IZS) is an effective system of links, cooperation rules, and coordination between rescue and security forces, government bodies, local authorities and individuals or legal entities. It is designed for joint execution of rescue and liquidation tasks and preparation for major emergencies.

MAIN COMPONENTS OF THE INTEGRATED RESCUE SYSTEM:

- 1) Fire Rescue Service of the Czech Republic
- 2) Fire Protection Units included in the regional fire coverage
- 3) Emergency Medical Service
- 4) Police of the Czech Republic

Municipal Police of Třebíč

The Municipal Police ensures local public order matters.

The city of Třebíč is continuously monitored by the city's surveillance camera system with recording.

Since 1999, the Municipal Police of Třebíč has been implementing the project of "City Surveillance Camera System" (MKDS) as part of its crime prevention program.

Currently, MKDS Třebíč operates 73 cameras in various locations and intersections. Three operators work at three stations in continuous operation.

Crisis Management

In the event of a threat, citizens are notified via sirens, announcements on the radio, television or on the city's website. Every first Wednesday of the month, at exactly noon, an acoustic test of the sirens is conducted.

Labor Market and Key Employers

EMPLOYERS IN THE TŘEBÍČ REGION

The largest employers in the region include Třebíč Hospital, Dukovany Nuclear Power Plant, Wera Werk, Cemex Concrete Plant, MANN + HUMMEL (CZ), TEDOM, 2JCP Třebíč, Fraenkische CZ, and Huhtamaki.

As of December 31, 2023, a total of 13,402 business entities operating under the Trade Licensing Act were registered in the administrative area of the Třebíč municipality with extended powers (ORP). Of these, 6,818 business entities were registered in the city of Třebíč, including 5,486 individuals (natural persons) and 1,332 legal entities (juridical persons).

The largest proportion of businesses in the city consists of so-called micro-enterprises (i.e., those with up to 10 employees). The second largest group is composed of medium-sized enterprises (i.e., those with up to 50 employees).

	31. 12. 2021	31. 12. 2022	31. 12. 2023
Total ORP Třebíč - NP + JP	14 738	14 751	13 402
Total ORP Třebíč - NP	12 569	12 515	11 131
Total ORP Třebíč - JP	2 169	2 236	2 271
Total Třebíč local parts - NP + JP	8 169	7 916	6 818
Total Třebíč local parts - NP	6 783	6 551	5 486
Total Třebíč local parts - JP	1 386	1 365	1 332



**1 000-1 500
EMPLOYEES**

- » TŘEBÍČ HOSPITAL,
CONTRIBUTORY ORGANIZATION
www.nem-tr.cz
- » WERA WERK S.R.O.
www.werawerk.cz



**100-500
EMPLOYEES**

- » ČEZ ENERGOSERVIS SPOL. S R.O.
www.cezenergoserwis.cz
- » DUKO S.R.O.
www.nahradniplneni.duko.eu
- » FRAENKISCHE CZ S.R.O.
www.fraenkische.com
- » I & C ENERGO A.S.
www.ic-energo.eu
- » TEDOM A.S.
www.tedom.com/cs
- » 2JCP TŘEBÍČ, A.S.
www.2jcp.com/cs
- » AGROZET ČESKÉ BUDĚJOVICE, A.S.
www.agrozet.cz
- » ELEKTRO S.M.S., SPOL. S R.O.
www.elektrosms.cz
- » GIENGER SPOL. S R.O.
www.gienger.cz
- » ICZ A.S.
www.iczgroup.com
- » MĚSTO TŘEBÍČ
www.trebic.cz
- » MODUS, SPOL. S R.O.
www.modus.cz
- » NUVIA A.S.
www.nuvia.com
- » RICHTER + FRENZEL S.R.O.
www.r-f.cz
- » SVĚT OKEN S.R.O.
www.svetoken.cz
- » VAP (SONEPAR)
www.sonepar.cz
- » LEXFIN S.R.O.
www.pravni-sluzby.lexfin.cz
- » OKNA MACEK A.S.
www.oknamacek.cz
- » S.O.K. STAVEBNÍ, S.R.O.
www.sok.cz
- » SEPOS, SPOL. S R. O.
www.sepos.cz
- » SIGMA PUMPY HRANICE, S.R.O.
www.sigmapumpy.com
- » ALSICO CZECHIA S.R.O.
www.alsico.com
- » ESKO-T S.R.O.
www.esko-t.cz
- » INAPA S.R.O.
www.inapa.cz
- » J + M AUTODÍLY, S.R.O.
www.praha.jmautodily.cz/cs
- » MICO, SPOL. S R.O.
www.mico.cz
- » TIPAFROST, A.S.
www.tipafrost.cz
- » TREBI S.R.O.
www.trebi.cz/bezpecnost
- » YASHICA S.R.O.
www.yashica.cz
- » ZMES, S.R.O.
www.zmes.cz



District Chamber of Commerce Třebíč



Creates opportunities for establishing and expanding business contacts, as well as for mutual sharing and meetings. It maps and enhances the business environment.

PROVIDES A WIDE RANGE OF SERVICES:

- Information service and consultancy
- Seminars on current topics
- Legislative feedback
- Projects related to education and the labor market
- Organizing events – conferences, social and sports events

Communicates with members on a daily basis. Works closely with companies in the region, schools, authorities, the Vysočina Region, partner cities and the network of Chambers of Commerce in the Czech Republic.



For more information, visit:
www.ohktrebic.cz

Association Energetic Třebíčsko



The Association "Energetic Třebíčsko" is a significant organization in the Třebíč region, focusing on the support and development of the energy sector. It was founded in 2013 by the District Chamber of Commerce Třebíč, the City of Třebíč, the Třebíč Secondary Industrial School, and the municipalities of Dukovany and Rouchovany.

This association was established with the aim of connecting various entities in the field of energy, including public institutions, industrial companies, and research organizations, creating a platform for collaboration and knowledge exchange. One of its main goals is to support sustainable energy and the development of the energy region.

The Association actively participates in various projects and initiatives focused on modernizing energy infrastructure. It organizes conferences, seminars and roundtables for professionals, connects the energy industry with local governments, collaborates with local communities and focuses on raising awareness and education in the field of nuclear energy. In this way, the association contributes to the economic and technological development of the Třebíč region and strengthens its position as a key energy center in the Czech Republic.



For more information, visit:
www.energeticketrebicsko.cz



Notes



E-mai: info@trebiczije.cz
© Published by the city of Třebíč 12/2024

www.trebiczije.cz